

REVOLAX™



GS Distribuidor



Firm & Lasting
Hyaluronic Acid Dermal Filler



GS Distribuidor

REVOLAX™

Firm & Lasting Hyaluronic Acid Dermal Filler



Fine
Superficial to top dermis

Forehead lines, Crow's feet, Glabella lines,
Neck wrinkle, Lower eyelid contouring



Deep
Mid to deep dermis / Subcutaneous layer

Nasolabial folds, Laugh lines, forehead, Nose,
chick, chin augmentation.



Sub-Q
Deep subcutaneous Layer

Nasolabial folds, Laugh lines, forehead, Nose, chick,
chin augmentation

1. Material Property



Benefits of REVOLAX™

High Purity

REVOLAX™ is bio-degradable gel that uses hyaluronic acid with high purity from bacterial fermentation. It is natural substance optimized to suit with human skin tissue.

Optimal Crosslinked HA

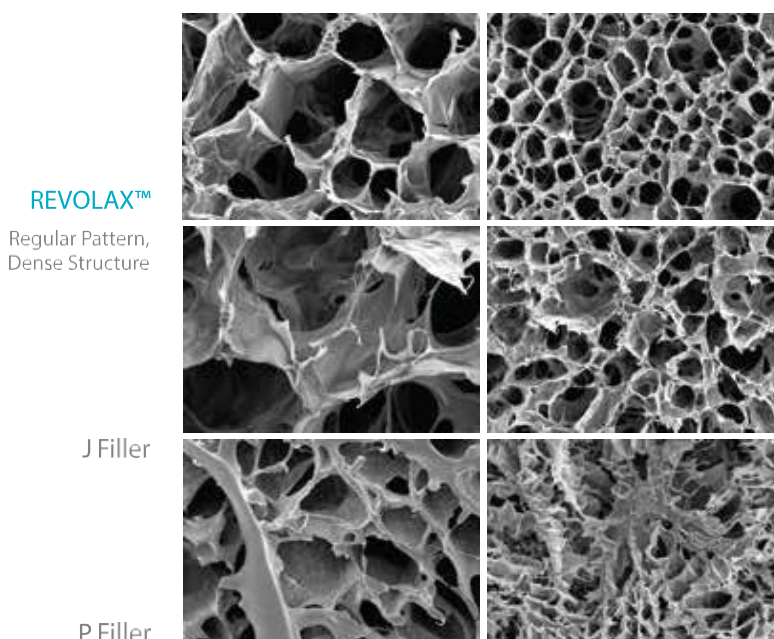
Our unique cross linking technology does not need adding free Hyaluronic acid to adjust physical property of the gel.

Visco-elasticity

Visco-elasticity is one of the most critical elements that determine longevity. Volume effect and molding ability of the gel has been optimized by level of visco-elasticity per product according to use and treatment area. REVOLAX™ makes sure longer lasting and stronger support for skin structure.

Consistent Monophasic

REVOLAX™ is made of regular and dense monophasic structure. The consistency of the pattern ensures not only naturally harmonized volume but easy and comfortable injection for both surgeons and patients.



Monophasic Structure

REVOLAX™ has a monophasic structure of regular and dense lattice which allows consistent smooth injection throughout the treatment and helps naturally harmonized volume and look. REVOLAX™ 's dense and regular patterns unlike other HA fillers make the structure much more solid and durable and more natural looking of all course of time when it is gradually absorbed into the skin.

REVOLAX™

2. Function

Soft injection

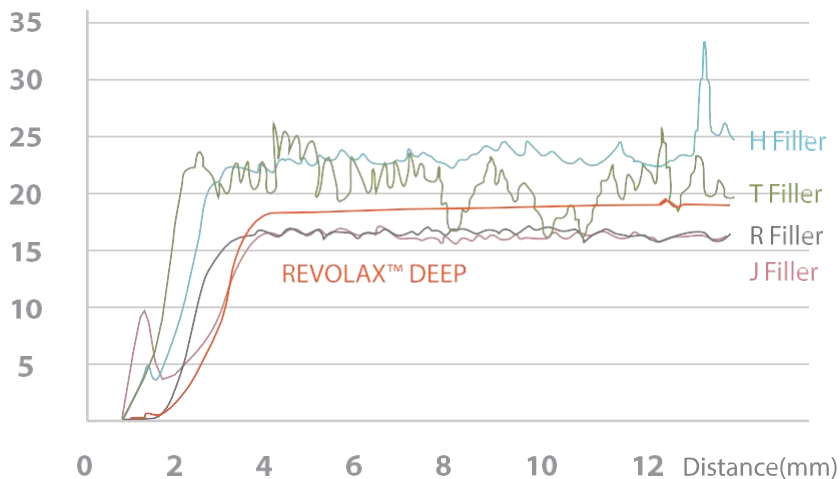
- By using Ultra Thin Wall needle, soft injection is available and helpful to minimize pop off.
- Due to uniform monophasic structure, REVOLAX™ can be properly injected without free HA.



Extrusion Force Test Graph



GS Distribuidor

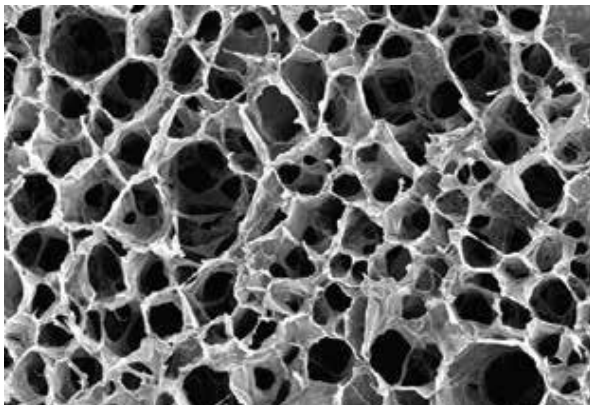


Product	N
REVOLAX™ DEEP	18.5
R Filler	16.3
J Filler Ultra+	16.0
H Filler	23.1
T Filler Deep Lines	22.2

** Ref. Data on file. Across

** Injection should be taking not just less force but consistent force as well.

The consistent extrusion force enables surgeons to control the injection easily and safely throughout the procedure.



Lasting

Highly structured monophasic and densely linked HA polymer enable to be last for long time and intended condition.

REVOLAX™

3. Clinical Study

Efficacy and Safety of REVOLAX™ Sub-Q with Lidocaine–Clinical Study Result (NCT02179606)

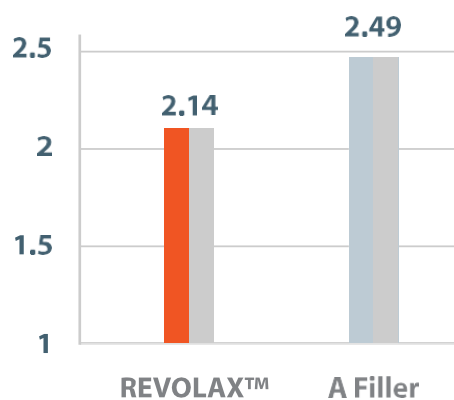
Study Design

Multi-Center, Randomized, Subject and Evaluator Blind, Split-Face, Comparative (24-Weeks)

Subjects

60 Subjects with confirmed WSRS(Wrinkle Severity Rating Scale) Grade 3 or 4 nasolabial folds who want correction

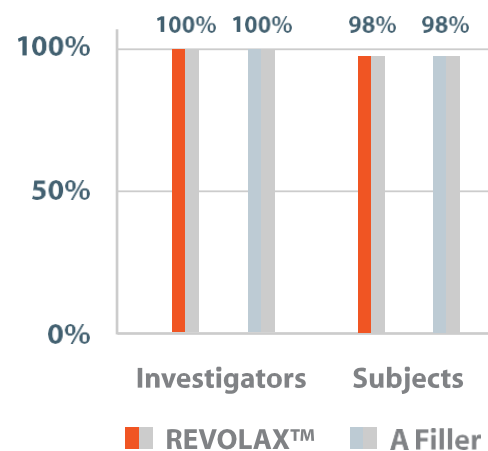
Comparison of the means of WSRS* in Week 24



Result : Mean WSRS* scores assessed at week 24 of REVOLAX™ are lower(Less Wrinkle) than those of A filler group.

*The Wrinkle Severity Rating Scale(WSRS)
□ 5:Extreme □ 4:Severe □ 3:Moderate □ 2:Mild □ 1:Absent

Evaluation of the overall aesthetic results by the investigators and the subjects (Calculated from GAIS)



Result : Both investigators and subjects were satisfied highly with the effect of the REVOLAX™group for 6months.

*Global Aesthetic Improvement Scale. (GAIS)

Results

In conclusion, the clinical trial verified that REVOLAX™ is an effective and safe medical device for the correction of nasolabial fold and not inferior to the reference device, A filler®

Conducted by

Chung-ang University Hospital of South Korea
Eulji General Hospital of South Korea



GS Distribuidor

